

Valentino Family Community Forest

Trails

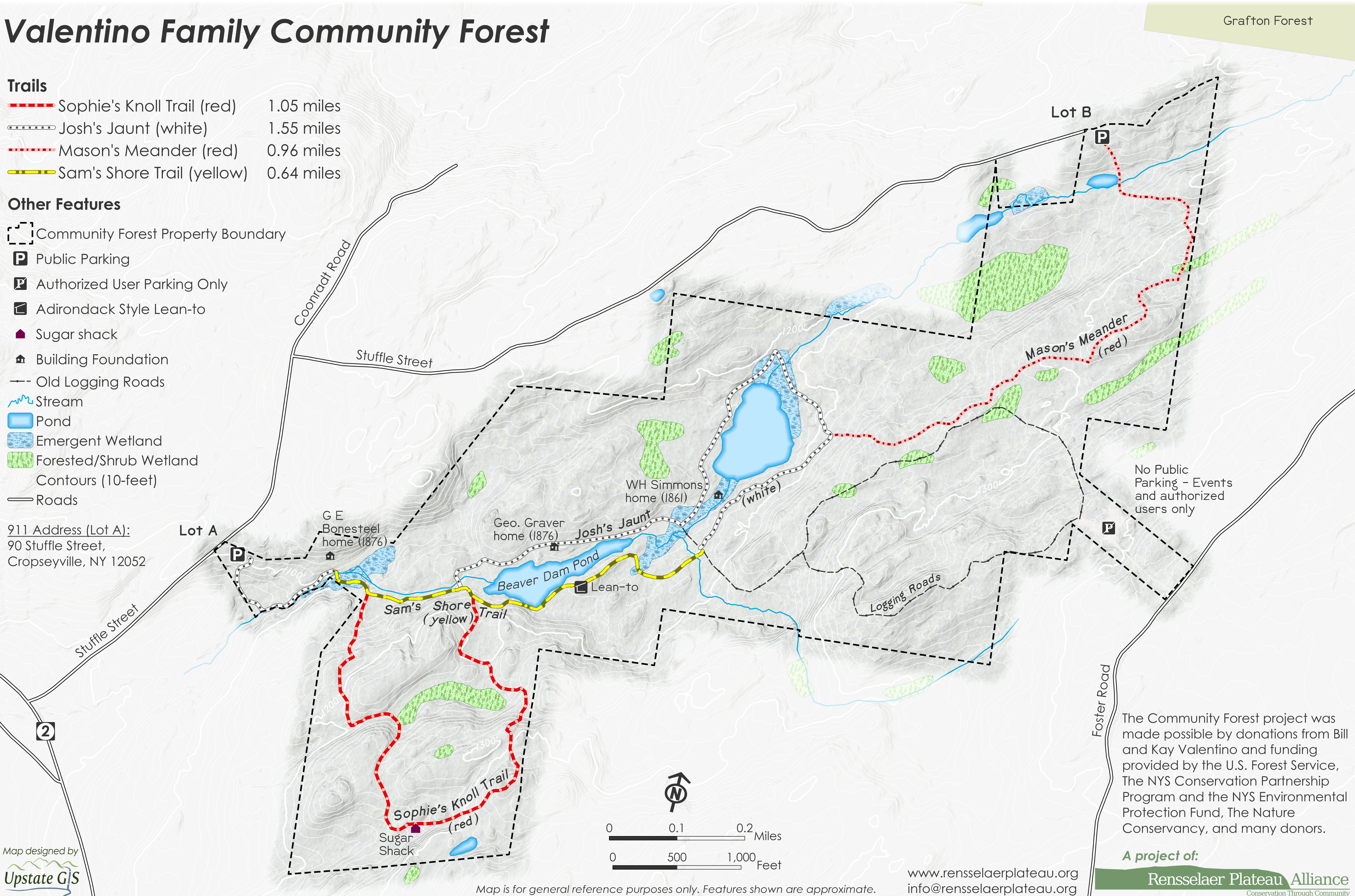
- Sophie's Knoll Trail (red) 1.05 miles
- Josh's Jaunt (white) 1.55 miles
- Mason's Meander (red) 0.96 miles
- Sam's Shore Trail (yellow) 0.64 miles

Other Features

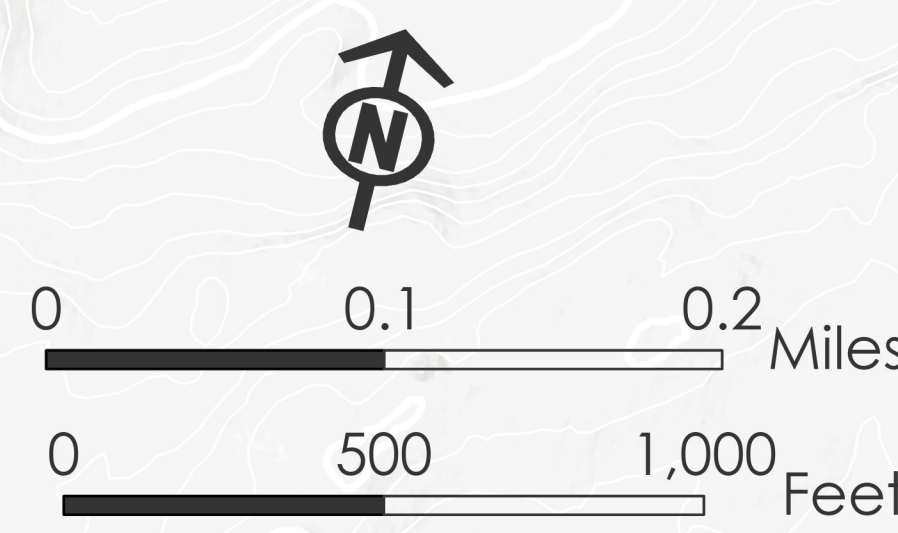
- Community Forest Property Boundary
- Public Parking
- Authorized User Parking Only
- Adirondack Style Lean-to
- Sugar shack
- Building Foundation
- Old Logging Roads
- Stream
- Pond
- Emergent Wetland
- Forested/Shrub Wetland
- Contours (10-feet)
- Roads

911 Address (Lot A):
90 Stuffle Street,
Cropseyville, NY 12052

Map designed by
Upstate GIS



No Public Parking - Events and authorized users only



Map is for general reference purposes only. Features shown are approximate.

www.renselaerplateau.org
info@rensselaerplateau.org

The Community Forest project was made possible by donations from Bill and Kay Valentino and funding provided by the U.S. Forest Service, The NYS Conservation Partnership Program and the NYS Environmental Protection Fund, The Nature Conservancy, and many donors.

A project of:
Rensselaer Plateau Alliance
Conservation Through Community