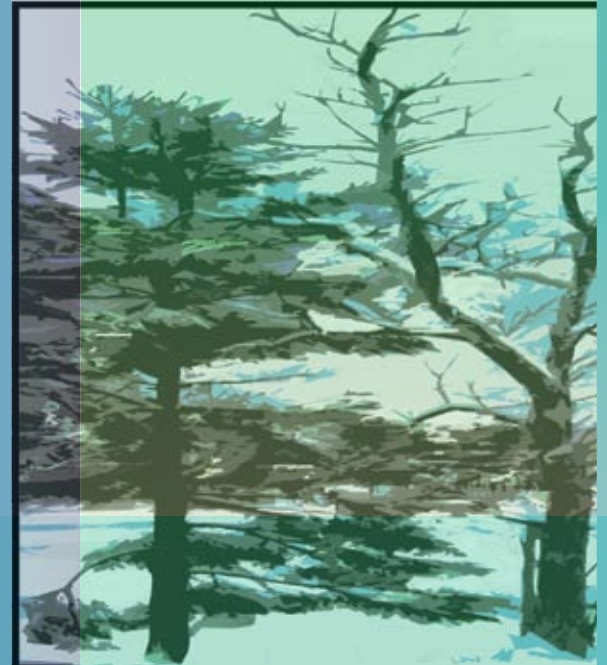




MISSION STATEMENT

The Rensselaer Plateau Alliance promotes and facilitates the protection of the Rensselaer Plateau's undeveloped and unfragmented forests. These possess many significant natural features and provide natural habitats for plants and animals, forest products, recreation and most important, water and air quality.

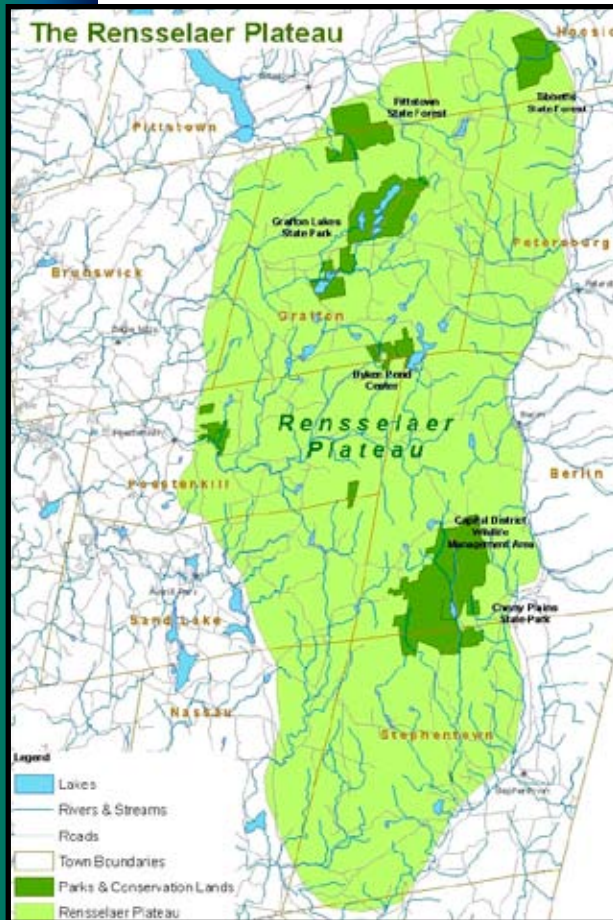


RENSSELAER PLATEAU ALLIANCE

the 5th largest forested area in New York State

A Vision of recreation, tourism and conservation

The Rensselaer Plateau Alliance



The Rensselaer Plateau is one of the largest and most ecologically intact native habitats in New York State. The preservation of this landscape for future generations is the vision of the Rensselaer Plateau Alliance.

The Rensselaer Plateau covers about 105,000 acres in the towns of Berlin, Brunswick, Grafton, Hoosick, Nassau, Petersburg, Pittstown, Poestenkill, Sand Lake and Stephentown. An escarpment steeply rising from the surrounding lower elevations marks the Plateau's boundary. The Plateau's relatively high elevations (1,000 – 1,800 feet) and cool climate, acidic soils, and its poor drainage contribute to plants, forests, and wetlands more similar to the Adirondacks than to the surrounding local area.

The boreal forest contains the headwaters of seven watersheds. Four drain into the Hudson River below the Troy Dam. Three of the northeast sections drain into the Hoosick River then into the Hudson River in Stillwater. Other waters feed the Tomhannock Reservoir (the public water supply for much of the county).

The Plateau is estimated to be the fifth largest forested region in New York State. Its forests still exist in relatively large continuous blocks with few dividing roads. The Plateau's forests are valuable in cleaning air, providing clean water and recharging ground water. They also provide healthy habitat for many native plants and wildlife. The large unbroken forest is essential to the populations of fisher, bobcat, bear, moose, porcupine, hermit thrush, and black-throated

blue warbler. Many birds are experiencing declining population numbers in the Northeast due in part to loss of large blocks of forest. Several plants found on the Plateau are found nowhere else in Rensselaer County.

The ecological distinctiveness of the Rensselaer Plateau has led it to be included in the **New York State's Open Space Plan**, and recognized as an important Bird Area by the *Audubon Society of New York*, and the focus of conservation efforts of the Rensselaer Land Trust and The Nature Conservancy.

The Rensselaer Plateau Alliance, a coalition of local organizations, trail users and private land owners, envisions a wildlife corridor of protected land connecting existing State Forests, State Parks, private easement lands, and the County's Dyken Pond Environmental Education Center. This corridor would preserve the large forest blocks and wildlife habitat, while increasing opportunities for recreation, tourism, and the growth of forest products.

For more information visit our web site at:

www.rensselearplateau.org

or e-mail :

info@rensselearplateau.org.

Members of the Rensselaer Plateau Alliance

Rensselaer Land Trust
Friends of the Dyken Pond Center
Friends of Grafton Lakes State Park
Grafton Trail Riders

Mohawk-Hudson Cycling Club
The Nature Conservancy
Private Land Owners